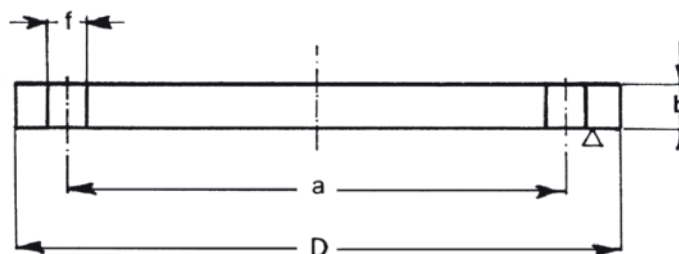


FLANGIA CIECA  
 BLIND FLANGES

TIPO 05A PN 2,5 - TYPE 05A PN 2,5



DN	D	b	f	a	VITI SCREWS	N. FORI N. HOLES	Kg.
10	75	12	11	50	M10	4	0,5
15	80	12	11	55	M10	4	0,5
20	90	14	11	65	M10	4	0,5
25	100	14	11	75	M10	4	1,0
32	120	14	14	90	M12	4	1,0
40	130	14	14	100	M12	4	1,5
50	140	14	14	110	M12	4	1,5
65	160	14	14	130	M12	4	2,0
80	190	16	18	150	M16	4	3,5
100	210	16	18	170	M16	4	4,0
125	240	18	18	200	M16	8	6,0
150	265	18	18	225	M16	8	7,5
200	320	20	18	280	M16	8	12,5
250	375	22	18	335	M16	12	18,5
300	440	22	22	395	M20	12	25,5
350	490	22	22	445	M20	12	32,0
400	540	22	22	495	M20	16	38,5
450	595	24	22	550	M20	16	51,0
500	645	24	22	600	M20	20	60,0
600	755	30	26	705	M24	20	103,0
700	860	40	26	810	M24	24	178,5
800	975	44	30	920	M27	24	252,0
900	1.075	48	30	1.020	M27	24	335,5
1000	1.175	52	30	1.120	M27	28	434,5
1200	1.375	50	30	1.320	M27	32	574,0
1400	1.575	*	30	1.520	M27	36	-
1600	1.790	*	30	1.730	M27	40	-
1800	1.990	*	30	1.930	M27	44	-
2000	2.190	*	30	2.130	M27	48	-

\* Da specificare dal committente.

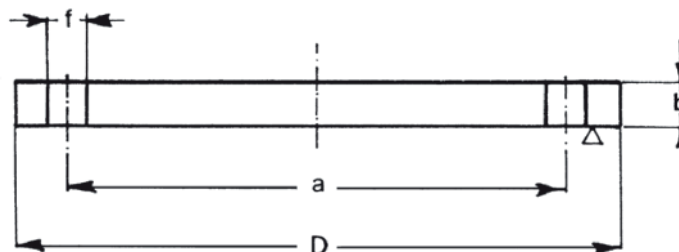
\* To be specified by the client.

Per gradino tipo B vedere pag. 42

For type B step, see page 42

FLANGIA CIECA  
 BLIND FLANGES

TIPO 05A PN 6 - TYPE 05A PN 6



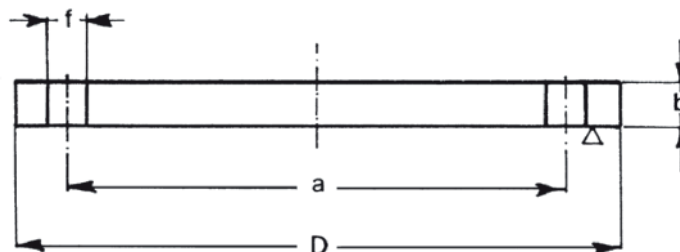
DN	D	b	f	a	VITI SCREWS	N. FORI N. HOLES	Kg.
10	75	12	11	50	M10	4	0,5
15	80	12	11	55	M10	4	0,5
20	90	14	11	65	M10	4	0,5
25	100	14	11	75	M10	4	1,0
32	120	14	14	90	M12	4	1,0
40	130	14	14	100	M12	4	1,5
50	140	14	14	110	M12	4	1,5
65	160	14	14	130	M12	4	2,0
80	190	16	18	150	M16	4	3,5
100	210	16	18	170	M16	4	4,0
125	240	18	18	200	M16	8	6,0
150	265	18	18	225	M16	8	7,5
200	320	20	18	280	M16	8	12,5
250	375	22	18	335	M16	12	18,5
300	440	22	22	395	M20	12	25,5
350	490	22	22	445	M20	12	32,0
400	540	22	22	495	M20	16	38,5
450	595	24	22	550	M20	16	51,0
500	645	24	22	600	M20	20	60,0
600	755	30	26	705	M24	20	103,0
700	860	40	26	810	M24	24	178,5
800	975	44	30	920	M27	24	252,0
900	1.075	48	30	1.020	M27	24	335,5
1000	1.175	52	30	1.120	M27	28	434,5
1200	1.405	60	33	1.340	M30	32	717,5
1400	1.630	68	36	1.560	M33	36	1.094,0
1600	1.830	76	36	1.760	M33	40	1.545,5
1800	2.045	84	39	1.970	M36	44	2.131,0
2000	2.265	92	42	2.180	M39	48	2.862,0

\* Da specificare dal committente.  
 \* To be specified by the client.

Per gradino tipo B vedere pag. 42  
 For type B step, see page 42

**FLANGIA CIECA**  
**BLIND FLANGES**

TIPO 05A PN 10 - TYPE 05A PN 10



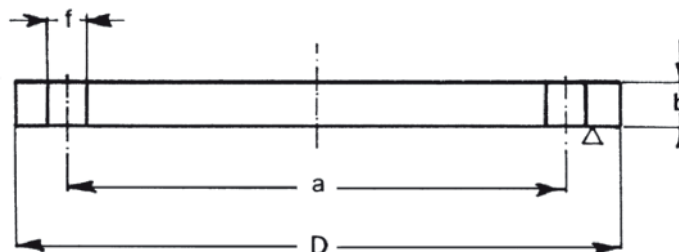
DN	D	b	f	a	VITI SCREWS	N. FORI N. HOLES	Kg.
10	90	16	14	60	M12	4	1,0
15	95	16	14	65	M12	4	1,0
20	105	18	14	75	M12	4	1,0
25	115	18	14	85	M12	4	1,5
32	140	18	18	100	M16	4	2,0
40	150	18	18	110	M16	4	2,5
50	165	18	18	125	M16	4	3,0
65	185	18	18	145	M16	8	3,5
80	200	20	18	160	M16	8	4,5
100	220	20	18	180	M16	8	5,5
125	250	22	18	210	M16	8	8,0
150	285	22	22	240	M20	8	10,5
200	340	24	22	295	M20	8	16,5
250	395	26	22	350	M20	12	24,0
300	445	26	22	400	M20	12	31,0
350	505	26	22	460	M20	16	39,5
400	565	26	26	515	M24	16	49,5
450	615	28	26	565	M24	20	63,0
500	670	28	26	620	M24	20	75,5
600	780	34	30	725	M27	20	124,0
700	895	38	30	840	M27	24	182,5
800	1.015	48	33	950	M30	24	297,0
900	1.115	50	33	1.050	M30	28	374,0
1000	1.230	54	36	1.160	M33	28	492,0
1200	1.455	66	39	1.380	M36	32	842,0
1400	1.675	*	42	1.590	M39	36	-
1600	1.915	*	48	1.820	M45	40	-
1800	2.115	*	48	2.020	M45	44	-
2000	2.325	*	48	2.230	M45	48	-

\* Da specificare dal committente.  
 \* To be specified by the client.

Per gradino tipo B vedere pag. 42  
 For type B step, see page 42

**FLANGIA CIECA**  
**BLIND FLANGES**

TIPO 05A PN 16 - TYPE 05A PN 16



DN	D	b	f	a	VITI SCREWS	N. FORI N. HOLES	Kg.
10	90	16	14	60	M12	4	1,0
15	95	16	14	65	M12	4	1,0
20	105	18	14	75	M12	4	1,0
25	115	18	14	85	M12	4	1,5
32	140	18	18	100	M16	4	2,0
40	150	18	18	110	M16	4	2,5
50	165	18	18	125	M16	4	3,0
65	185	18	18	145	M16	8	3,5
80	200	20	18	160	M16	8	4,5
100	220	20	18	180	M16	8	5,5
125	250	22	18	210	M16	8	8,0
150	285	22	22	240	M20	8	10,5
200	340	24	22	295	M20	12	16,5
250	405	26	26	355	M24	12	25,0
300	460	28	26	410	M24	12	35,0
350	520	30	26	470	M24	16	48,0
400	580	32	30	525	M27	16	63,5
450	640	40	30	585	M27	20	96,5
500	715	44	33	650	M30	20	133,0
600	840	54	36	770	M33	20	226,5
700	910	58	36	840	M33	24	285,0
800	1.025	62	39	950	M36	24	388,0
900	1.125	64	39	1.050	M36	28	483,0
1000	1.255	68	42	1.170	M39	28	640,0
1200	1.485	*	48	1.390	M45	32	-
1400	1.685	*	48	1.590	M45	36	-
1600	1.930	*	56	1.820	M52	40	-
1800	2.130	*	56	2.020	M52	44	-
2000	2.345	*	62	2.230	M56	48	-

\* Da specificare dal committente.

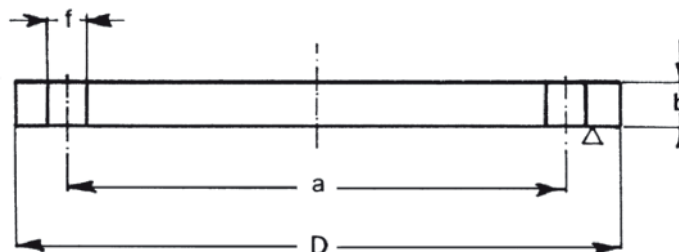
\* To be specified by the client.

Per gradino tipo B vedere pag. 42

For type B step, see page 42

FLANGIA CIECA  
 BLIND FLANGES

TIPO 05A PN 25 - TYPE 05A PN 25



DN	D	b	f	a	VITI SCREWS	N. FORI N. HOLES	Kg.
10	90	16	14	60	M12	4	1,0
15	95	16	14	65	M12	4	1,0
20	105	18	14	75	M12	4	1,0
25	115	18	14	85	M12	4	1,5
32	140	18	18	100	M16	4	2,0
40	150	18	18	110	M16	4	2,5
50	165	20	18	125	M16	4	3,0
65	185	22	18	145	M16	8	4,5
80	200	24	18	160	M16	8	5,5
100	235	24	22	190	M20	8	7,5
125	270	26	26	220	M24	8	11,0
150	300	28	26	250	M24	8	14,5
200	360	30	26	310	M24	12	22,5
250	425	32	30	370	M27	12	33,5
300	485	34	30	430	M27	16	46,5
350	555	38	33	490	M30	16	68,0
400	620	40	36	550	M33	16	89,5
450	670	50	36	600	M33	20	130,0
500	730	51	36	660	M33	20	159,0
600	845	66	39	770	M36	20	278,0
700	960	*	42	875	M39	24	-
800	1.085	*	48	990	M45	24	-
900	1.185	*	48	1.090	M45	28	-
1000	1.320	*	56	1.210	M52	28	-

\* Da specificare dal committente.

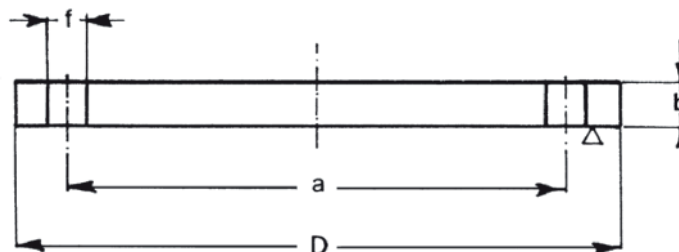
\* To be specified by the client.

Per gradino tipo B vedere pag. 42

For type B step, see page 42

FLANGIA CIECA  
 BLIND FLANGES

TIPO 05A PN 40 - TYPE 05A PN 40



DN	D	b	f	a	VITI SCREWS	N. FORI N. HOLES	Kg.
10	90	16	14	60	M12	4	1,0
15	95	16	14	65	M12	4	1,0
20	105	18	14	75	M12	4	1,0
25	115	18	14	85	M12	4	1,5
32	140	18	18	100	M16	4	2,0
40	150	18	18	110	M16	4	2,5
50	165	20	18	125	M16	4	3,0
65	185	22	18	145	M16	8	4,5
80	200	24	18	160	M16	8	5,5
100	235	24	22	190	M20	8	7,5
125	270	26	26	220	M24	8	11,0
150	300	28	26	250	M24	8	14,5
200	375	36	30	320	M27	12	29,0
250	450	38	33	385	M30	12	44,5
300	515	42	33	450	M30	16	64,0
350	580	46	36	510	M33	16	89,5
400	660	50	39	585	M36	16	127,0
450	685	57	39	610	M36	20	154,0
500	755	57	42	670	M39	20	188,0
600	890	72	48	795	M45	20	331,0

\* Da specificare dal committente.

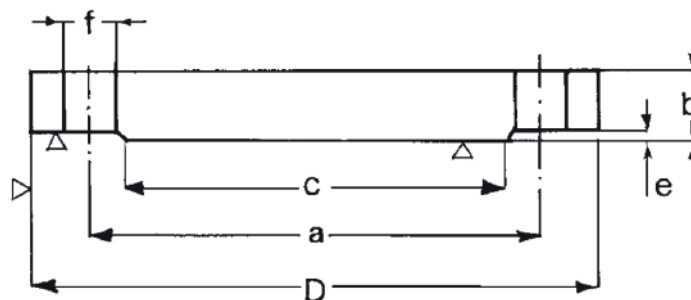
\* To be specified by the client.

Per gradino tipo B vedere pag. 42

For type B step, see page 42

FLANGIA CIECA  
 BLIND FLANGES

TIPO 05B PN 63 - TYPE 05B PN 63



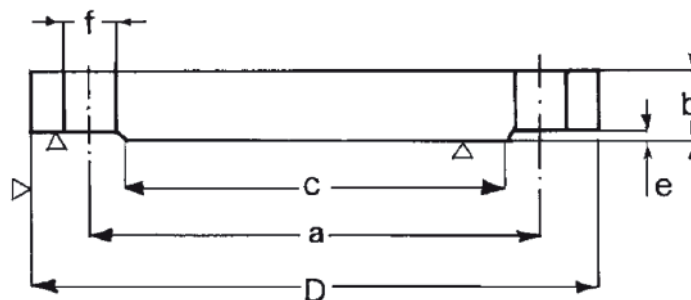
DN	D	b	c	e	f	a	VITI SCREWS	N. FORI N. HOLES	Kg.
10	100	20	40	2	14	70	M12	4	1,0
15	105	20	45	2	14	75	M12	4	1,5
20	130	22	58	2	18	90	M16	4	2,0
25	140	24	68	2	18	100	M16	4	2,5
32	155	24	78	2	22	110	M20	4	3,5
40	170	26	88	3	22	125	M20	4	4,5
50	180	26	102	3	22	135	M20	4	5,0
65	205	26	122	3	22	160	M20	8	6,0
80	215	28	138	3	22	170	M20	8	7,5
100	250	30	162	3	26	200	M24	8	10,5
125	295	34	188	3	30	240	M27	8	16,5
150	345	36	218	3	33	280	M30	8	24,5
200	415	42	285	3	36	345	M33	12	40,5
250	470	46	345	3	36	400	M33	12	58,0
300	530	52	410	4	36	460	M33	16	83,5
350	600	56	465	4	39	525	M36	16	116,0
400	670	60	535	4	42	585	M39	16	155,5
500	800	*	615	4	48	705	M45	20	-
600	930	*	735	5	56	820	M52	20	-
700	1.045	*	840	5	56	935	M52	24	-

\* Da specificare dal committente.

\* To be specified by the client.

FLANGIA CIECA  
 BLIND FLANGES

TIPO 05B PN 100 - TYPE 05B PN 100



DN	D	b	c	e	f	a	VITI SCREWS	N. FORI N. HOLES	Kg.
10	100	20	40	2	14	70	M12	4	1,0
15	105	20	45	2	14	75	M12	4	1,5
20	130	22	58	2	18	90	M16	4	2,0
25	140	24	68	2	18	100	M16	4	2,5
32	155	24	78	2	22	110	M20	4	3,5
40	170	26	88	3	22	125	M20	4	4,5
50	195	28	102	3	26	145	M24	4	6,0
65	220	30	122	3	26	170	M24	8	8,0
80	230	32	138	3	26	180	M24	8	9,5
100	265	36	162	3	30	210	M27	8	14,0
125	315	40	188	3	33	250	M30	8	22,5
150	355	44	218	3	33	290	M30	12	30,5
200	430	52	285	3	36	360	M33	12	54,5
250	505	60	345	3	39	430	M36	12	87,5
300	585	68	410	4	42	500	M39	16	131,5
350	655	74	465	4	48	560	M45	16	179,0
400	715	*	535	4	48	620	M45	16	-
500	870	*	615	4	56	760	M52	20	-

\* Da specificare dal committente.

\* To be specified by the client.