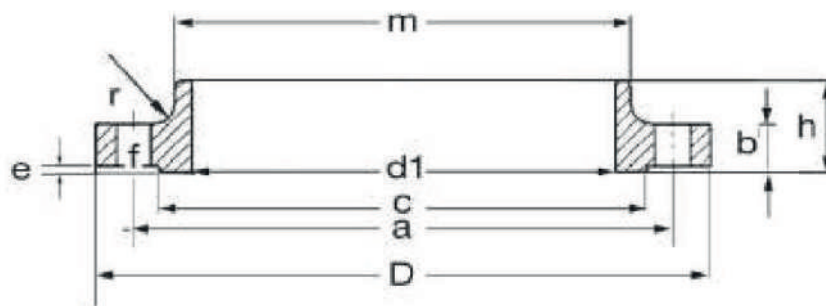


**FLANGIA FILETTATA A COLLARE**  
**THREADED FLANGES**
**TIPO 13 PN 6 - TYPE 13 PN 6**


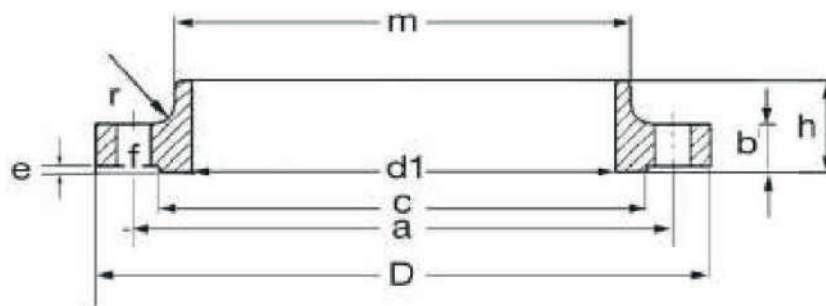
DN = d <sub>1</sub>	D	b	h	m	c	e	r	f	a	VITI SCREWS	N. FORI N. HOLES	Kg.
10 - 3/8" gas	75	12	20	25	35	2	4	11	50	M10	4	0,5
15 - 1/2" gas	80	12	20	30	40	2	4	11	55	M10	4	0,5
20 - 3/4" gas	90	14	24	40	50	2	4	11	65	M10	4	0,5
25 - 1" gas	100	14	24	50	60	2	4	11	75	M10	4	1,0
32 - 1.1/4" gas	120	14	26	60	70	2	6	14	90	M12	4	1,0
40 - 1.1/2" gas	130	14	26	70	80	3	6	14	100	M12	4	1,5
50 - 2" gas	140	14	28	80	90	3	6	14	110	M12	4	1,5
65 - 2.1/2" gas	160	14	32	100	110	3	6	14	130	M12	4	2,0
80 - 3" gas	190	16	34	110	128	3	8	18	150	M16	4	3,0
100 - 4" gas	210	16	40	130	148	3	8	18	170	M16	4	3,0
125 - 5" gas	240	18	44	160	178	3	8	18	200	M16	8	4,5
150 - 6" gas	265	18	44	185	202	3	10	18	225	M16	8	5,0

**TIPO 13 PN 10/16 - TYPE 13 PN 10/16**

DN = d <sub>1</sub>	D	b	h	m	c	e	r	f	a	VITI SCREWS	N. FORI N. HOLES	Kg.
10 - 3/8" gas	90	16	22	30	40	2	4	14	60	M12	4	0,5
15 - 1/2" gas	95	16	22	35	45	2	4	14	65	M12	4	0,5
20 - 3/4" gas	105	18	26	45	58	2	4	14	75	M12	4	1,0
25 - 1" gas	115	18	28	52	68	2	4	14	85	M12	4	1,5
32 - 1.1/4" gas	140	18	30	60	78	2	6	18	100	M16	4	2,0
40 - 1.1/2" gas	150	18	32	70	88	3	6	18	110	M16	4	2,0
50 - 2" gas	165	18	28	84	102	3	6	18	125	M16	4	3,0
65 - 2.1/2" gas	185	18	32	104	122	3	6	18	145	M16	8	3,0
80 - 3" gas	200	20	34	118	138	3	6	18	160	M16	8	4,0
100 - 4" gas	220	20	40	140	158	3	8	18	180	M16	8	4,5
125 - 5" gas	250	22	44	168	188	3	8	18	210	M16	8	6,5
150 - 6" gas	285	22	44	195	212	3	10	22	240	M20	8	7,5

**FLANGIA FILETTATA A COLLARE**  
**THREADED FLANGES**

TIPO 13 PN 25/40 - TYPE 13 PN 25/40



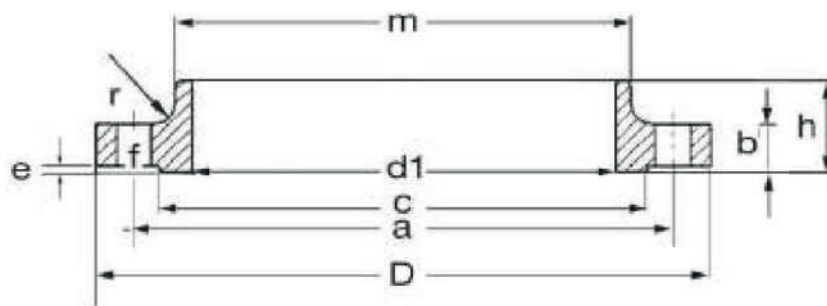
DN = d <sub>1</sub>	D	b	h	m	c	e	r	f	a	VITI SCREWS	N. FORI N. HOLES	Kg.
10 - 3/8" gas	90	16	22	30	40	2	4	14	60	M12	4	0,5
15 - 1/2" gas	95	16	22	35	45	2	4	14	65	M12	4	0,5
20 - 3/4" gas	105	18	26	45	58	2	4	14	75	M12	4	1,0
25 - 1" gas	115	18	28	52	68	2	4	14	85	M12	4	1,5
32 - 1.1/4" gas	140	18	30	60	78	2	6	18	100	M16	4	2,0
40 - 1.1/2" gas	150	18	32	70	88	3	6	18	110	M16	4	2,0
50 - 2" gas	165	20	34	84	102	3	6	18	125	M16	4	3,0
65 - 2.1/2" gas	185	22	38	104	122	3	6	18	145	M16	8	4,0
80 - 3" gas	200	24	40	118	138	3	8	18	160	M16	8	4,5
100 - 4" gas	235	24	44	145	162	3	8	22	190	M20	8	6,5
125 - 5" gas	270	26	48	170	188	3	8	26	220	M24	8	8,5
150 - 6" gas	300	28	52	200	218	3	10	26	250	M24	8	11,0

TIPO 13 PN 63 - TYPE 13 PN 63

DN = d <sub>1</sub>	D	b	h	m	c	e	r	f	a	VITI SCREWS	N. FORI N. HOLES	Kg.
10 - 3/8" gas	100	20	28	40	40	2	4	14	70	M12	4	1,0
15 - 1/2" gas	105	20	28	43	45	2	4	14	75	M12	4	1,0
20 - 3/4" gas	130	22	30	52	58	2	4	18	90	M16	4	2,0
25 - 1" gas	140	24	32	60	68	2	4	18	100	M16	4	2,5
32 - 1.1/4" gas	155	24	32	68	78	2	6	22	110	M20	4	3,0
40 - 1.1/2" gas	170	26	34	80	88	3	6	22	125	M20	4	4,0
50 - 2" gas	180	26	36	90	102	3	6	22	135	M20	4	4,5
65 - 2.1/2" gas	205	26	40	112	122	3	6	22	160	M20	8	5,5
80 - 3" gas	215	28	44	125	138	3	8	22	170	M20	8	6,5
100 - 4" gas	250	30	52	152	162	3	8	26	200	M24	8	9,0
125 - 5" gas	295	34	56	185	188	3	8	30	240	M27	8	14,0
150 - 6" gas	345	36	60	215	218	3	10	33	280	M30	8	20,0

FLANGIA FILETTATA A COLLARE  
 THREADED FLANGES

TIPO 13 PN 100 - TYPE 13 PN 100



DN = d <sub>1</sub>	D	b	h	m	c	e	r	f	a	VITI SCREWS	N. FORI N. HOLES	Kg.
10 - 3/8" gas	100	20	28	40	40	2	4	14	70	M12	4	1,0
15 - 1/2" gas	105	20	28	43	45	2	4	14	75	M12	4	1,0
20 - 3/4" gas	130	22	30	52	58	2	4	18	90	M16	4	2,0
25 - 1" gas	140	24	32	60	68	2	4	18	100	M16	4	2,5
32 - 1.1/4" gas	155	24	32	68	78	2	6	22	110	M20	4	3,0
40 - 1.1/2" gas	170	26	34	80	88	3	6	22	125	M20	4	4,0
50 - 2" gas	195	28	36	95	102	3	6	26	145	M24	4	5,5
65 - 2.1/2" gas	220	30	40	118	122	3	6	26	170	M24	8	7,0
80 - 3" gas	230	32	44	130	138	3	8	26	180	M24	8	8,0
100 - 4" gas	265	36	52	158	162	3	8	30	210	M27	8	12,0
125 - 5" gas	315	40	56	188	188	3	8	33	250	M30	8	18,5
150 - 6" gas	355	44	60	225	218	3	10	33	290	M30	12	24,5